

**Figure 28-1**

**HOW VERISIGN REGISTRY-REGISTRAR TWO-FACTOR AUTHENTICATION SERVICE WORKS**



**Figure 28-1: Verisign Registry-Registrar Two-Factor Authentication Service**

Figure 28-2

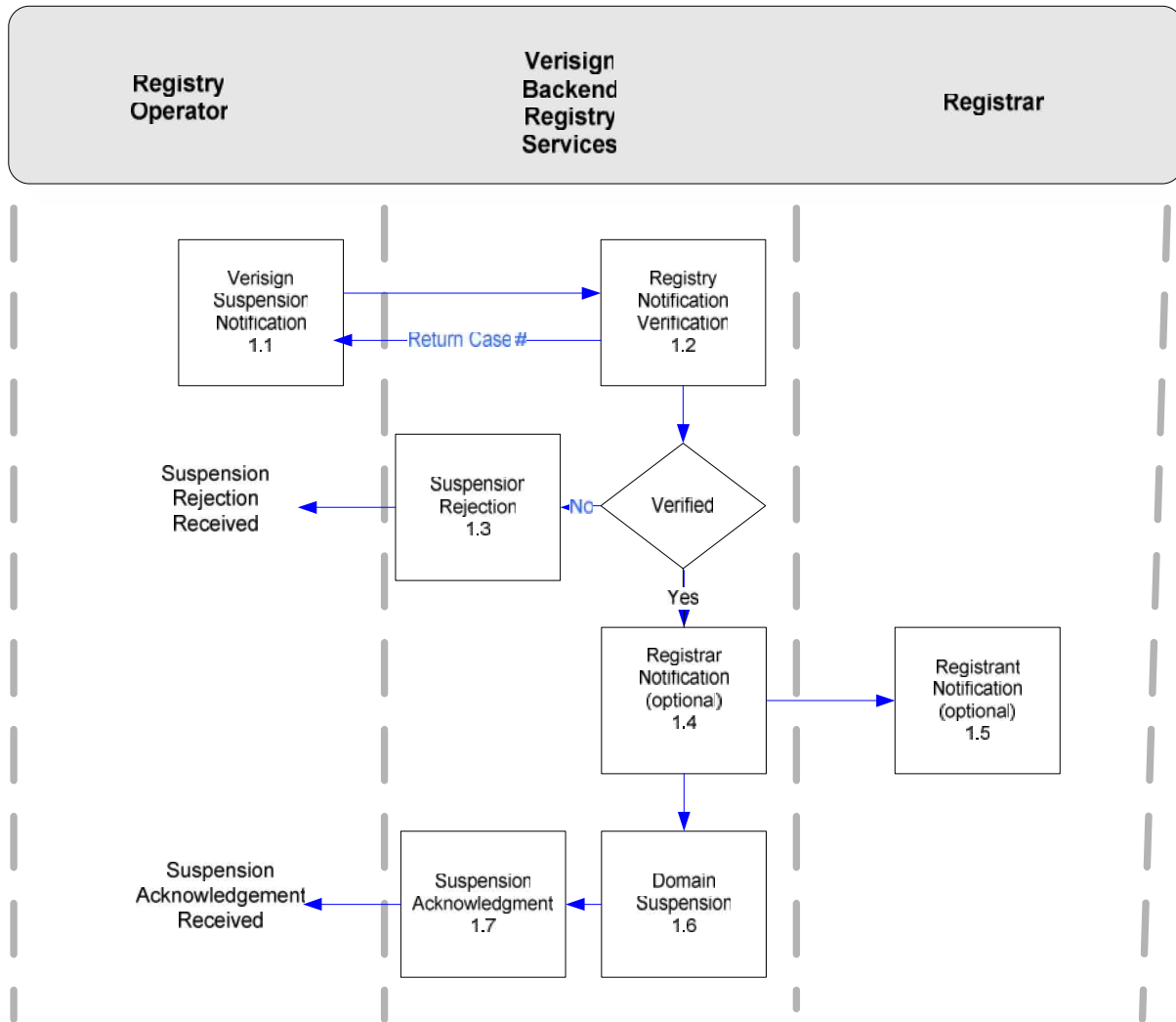


Figure 28-2: Suspension processes conducted by backend registry services provider