

Attachment**Question 24 Shared Registration System (SRS) Performance**

Compliance	RFC	Description
Yes	5730(http://tools.ietf.org/rfc/rfc5730)	Extensible Provisioning Protocol (EPP)
Yes	5731(http://tools.ietf.org/rfc/rfc5731)	Extensible Provisioning Protocol (EPP) Domain Name Mapping
Yes	5732(http://tools.ietf.org/rfc/rfc5732)	Extensible Provisioning Protocol (EPP) Host Mapping
Yes	5733(http://tools.ietf.org/rfc/rfc5733)	Extensible Provisioning Protocol (EPP) Contact Mapping
Yes	5734(http://tools.ietf.org/rfc/rfc5734)	Extensible Provisioning Protocol (EPP) Transport over TCP
Yes	5910(http://tools.ietf.org/rfc/rfc5730)	Domain Name System (DNS) Security Extensions Mapping for the Extensible Provisioning Protocol (EPP)

Table 24-1 Compliant with EPP RFCs

ITEM	Requirement	TWNIC's performance
EPP service availability	≤ 864 min of downtime (≈ 98%)	0 min of downtime
EPP session-command RTT	≤ 4000 ms, for at least 90% of the commands	1620 msec, for at least 90% of the commands
EPP query-command RTT	≤ 2000 ms, for at least 90% of the commands	317 msec, for at least 90% of the commands
EPP transform-command RTT	≤ 4000 ms, for at least 90% of the commands	1867 msec, for at least 90% of the commands

Table 24-2 TWNIC's EPP Performance

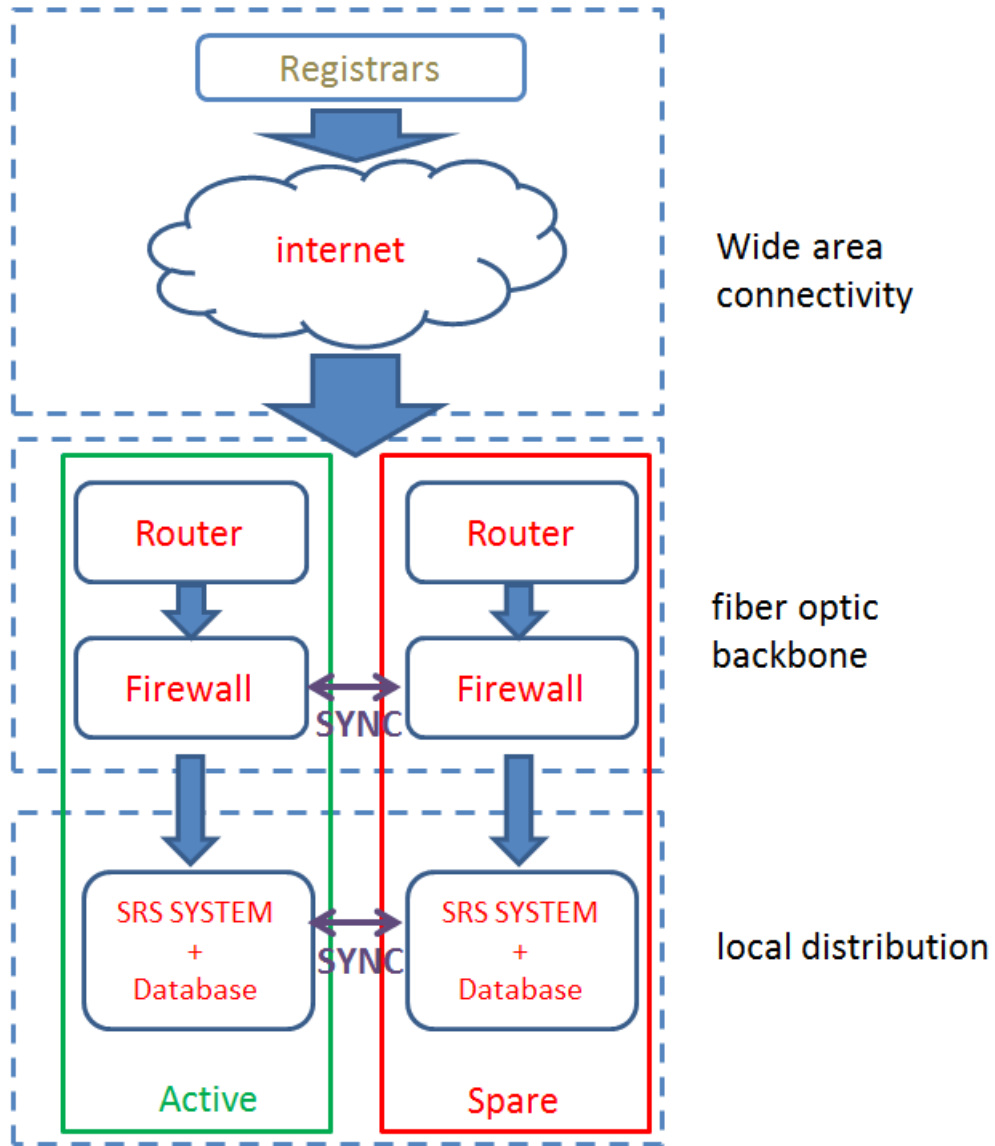


Figure 24-1 Network Diagram

Item	Position	Job Description	No. of Employees
Initial Implementation	Development/Engineering	Work on the implementation	4
	Database Administration	Design DB schema	2
	Systems Administration	Install OS and Software	2
	Network Engineering.	Design Network Architecture	2
	Information Security	Check Security issue	1
	Test team	Testing function and check result.	3
Ongoing Maintenance	Development/Engineering	Function and bug fix	2
	Engineer	Work on the ongoing maintenance	2
	Network Engineering.	Maintenance Network	2

Table 24-3 Resourcing Plans