

Attachment

Question 25 Extensible Provisioning Protocol

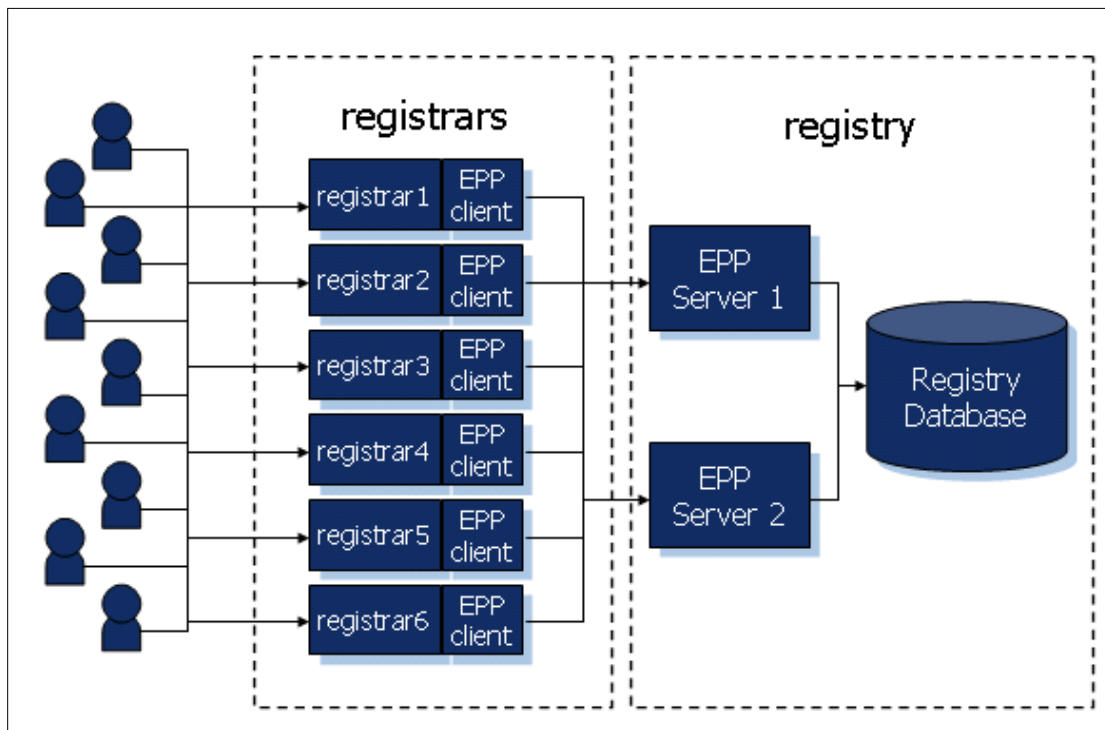


Figure 25-1 .政府 Registry's EPP Structure

1. Session management command	Hell, login and logout
2. Query command	Check and info
3. Data transform command	Create, update, delete, transfer, and renew

Table 25-1 EPP Function

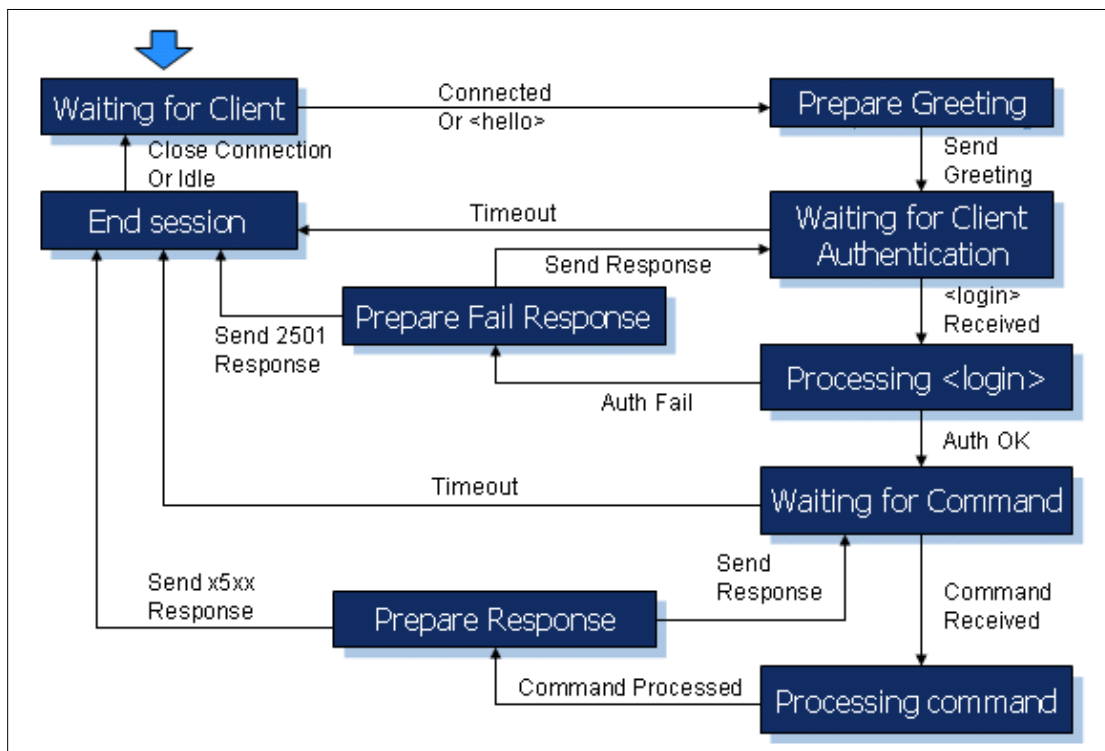


Figure 25-2 EPP Command Flow Chart

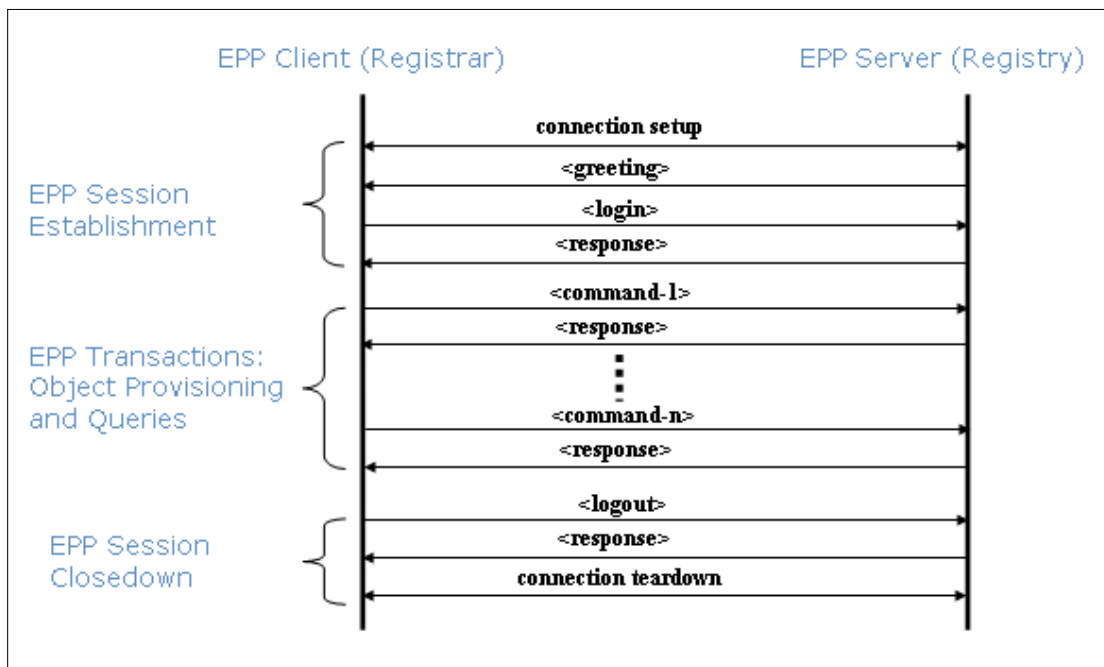


Figure 25-3 EPP Session

RFC	Description	Compliance
3735	Guidelines for Extending the Extensible Provisioning Protocol (EPP)	Yes
3915	Domain Registry Grace Period Mapping for the Extensible Provisioning Protocol (EPP)	Yes
5730	Extensible Provisioning Protocol (EPP)	Yes
5731	Extensible Provisioning Protocol (EPP) Domain Name Mapping	Yes
5732	Extensible Provisioning Protocol (EPP) Host Mapping	Yes
5733	Extensible Provisioning Protocol (EPP) Contact Mapping	Yes
5734	Extensible Provisioning Protocol (EPP) Transport over TCP	Yes
5910	Domain Name System (DNS) Security Extensions Mapping for the Extensible Provisioning Protocol (EPP)	Yes

Table 25-2 Comply with RFCs and Specifications

Extension Name	Depiction
IDN	To be used when registering a IDN domain name, which <domain:create> and <domain:info> will respond registrar that there will be element(s) other than the standard EPP.
Registry gateway	Registrar does not directly connect to the registry's EPP system for domain name registration, but through the registrar gateway. This extension is used to identify the registrar, which is the element other than the standard EPP.

Table 25-3 Proprietary EPP Extensions

```

<element type="idn:resDataType" name="resData"/>
- <complexType name="resDataType">
  - <sequence>
    - <choice>
      <element type="idn:infDataTypes" name="infData" maxOccurs="unbounded"/>
    </choice>
  </sequence>
</complexType>
- <complexType name="infDataTypes">
  - <sequence>
    <element type="idn:value" name="traditionalName" minOccurs="0"/>
    <element type="idn:value" name="simpleName" minOccurs="0"/>
  </sequence>
</complexType>
- <simpleType name="value">
  - <restriction base="token">
    <minLength value="1"/>
    <maxLength value="255"/>
  </restriction>
</simpleType>

```

Figure 25-4

```
<element type="twNIC:twNICType" name="twNIC"/>
- <complexType name="twNICType">
  - <sequence>
    <element type="eppcom:clIDType" name="registar"/>
  </sequence>
</complexType>
```

Figure 25-5

Item	Position	Job Description	No. of Employee
Initial Implementation	Manager	Take responsibility for databases maintenance	2
	Engineer	Work on the implementation/maintain	2
Ongoing Maintenance	Manager	Take responsibility for quality assurance	2
	Engineer	Work on the implementation/maintain	2

Table 25-4 Resourcing Plans