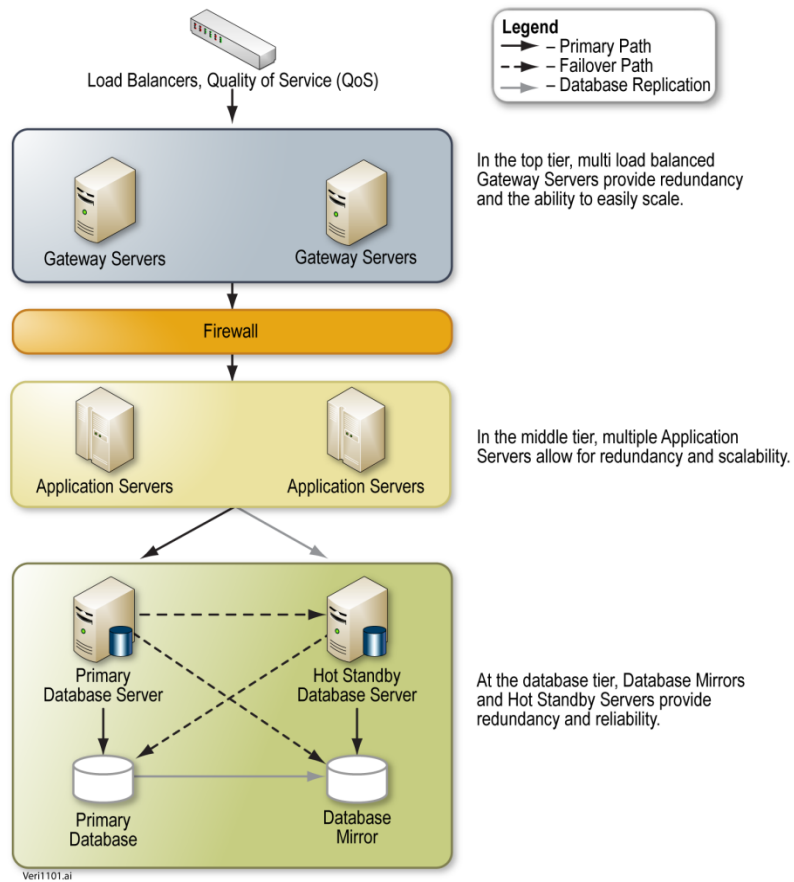
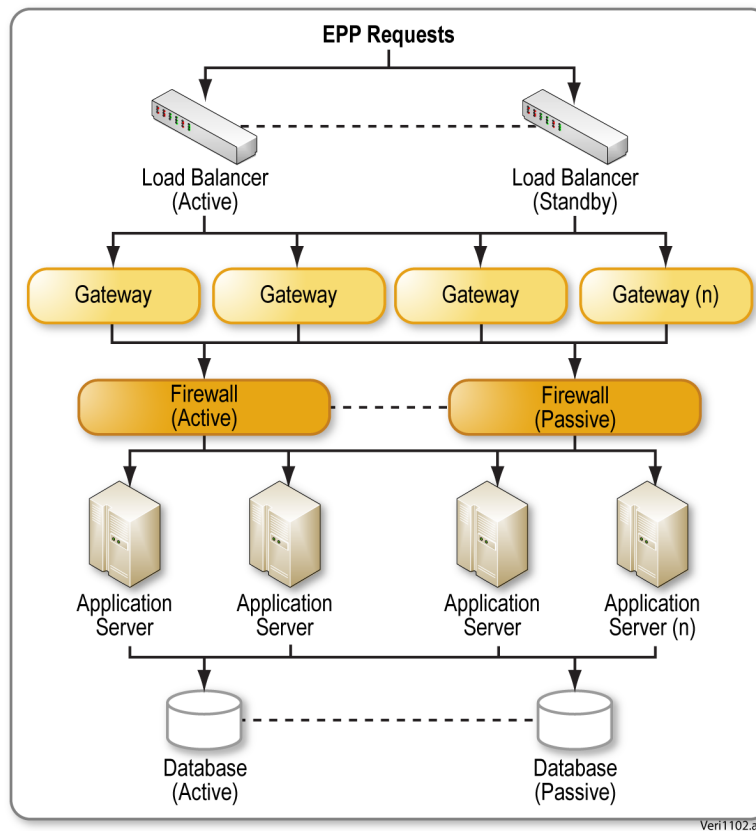


**Figure 24-1**



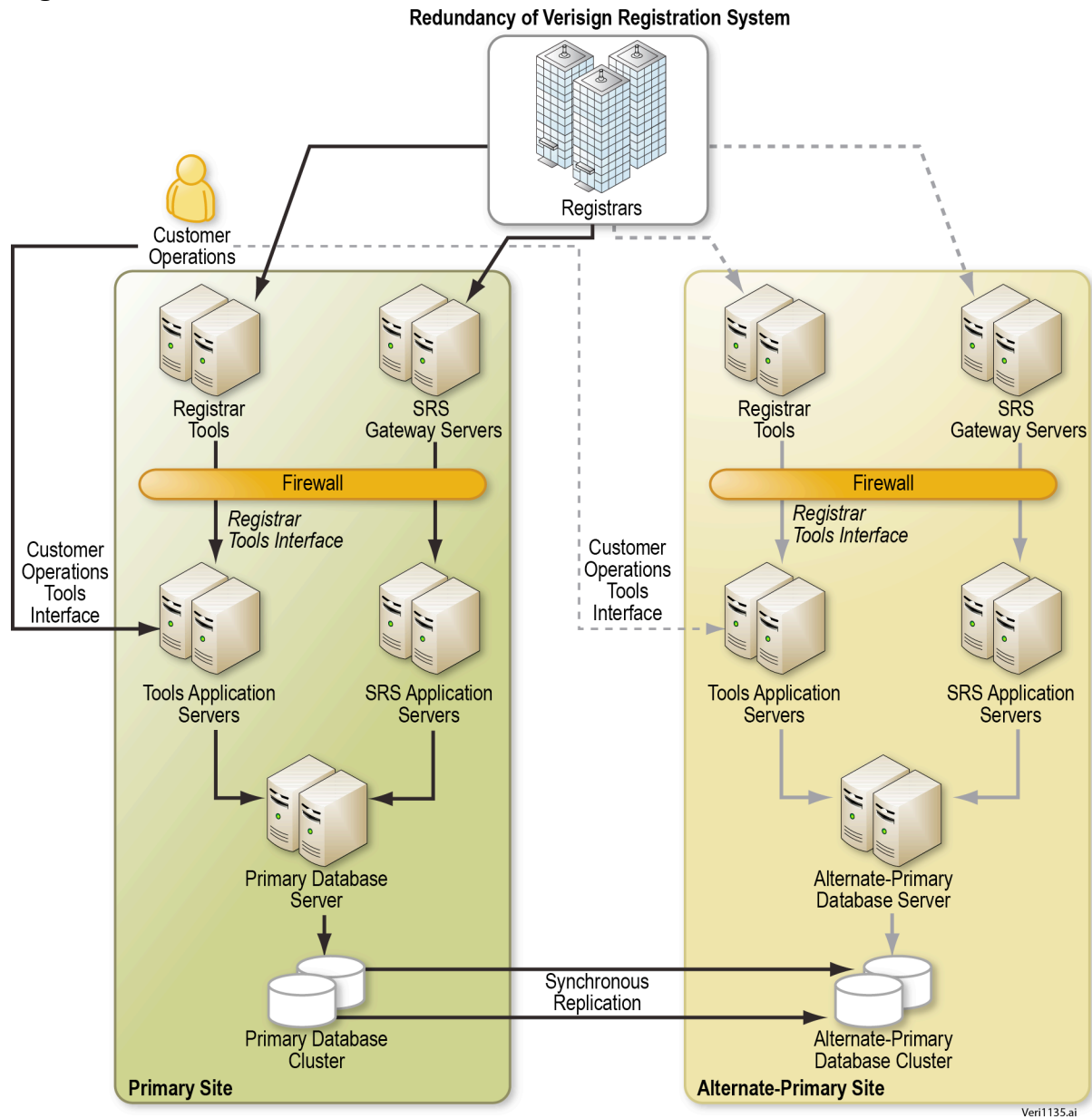
**Figure 241: SRS Architecture.** Verisign's SRS is hierarchically designed to meet the forecasted registration volume of the **.livestrong** gTLD, and it can be scaled to meet future registration volume increases.

**Figure 24-2**



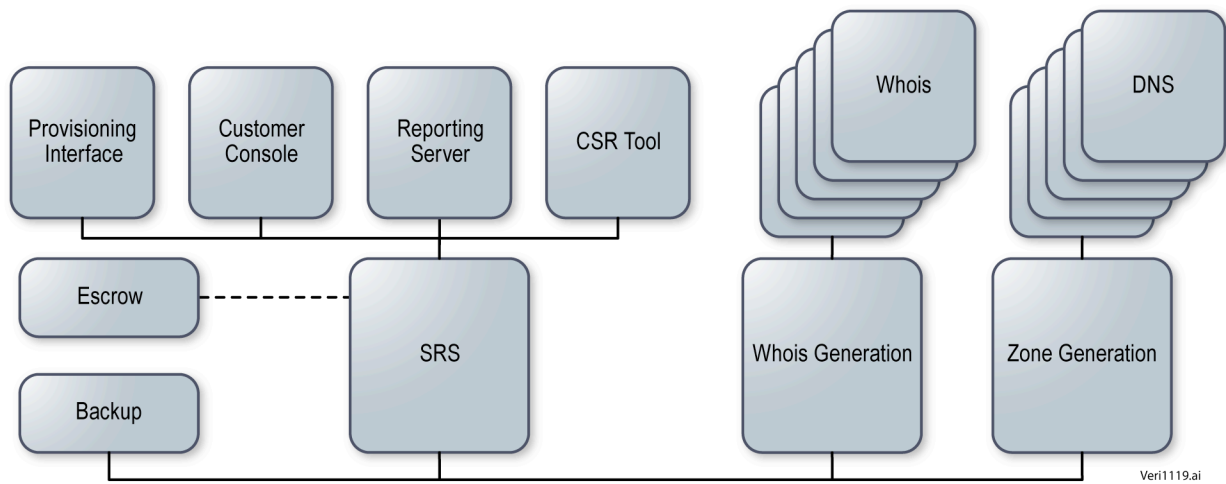
**Figure 242: Built-in SRS Redundancy.** *Verisign's SRS system is built upon multiple layers of redundancy to ensure the system remains highly available.*

**Figure 24-3**



**Figure 243: SRS Network Diagram.** Verisign's fully redundant SRS design and geographically separated data centers help ensure service level availability requirements are met.

**Figure 24-4**



**Figure 244: Technical Overview.** *Verisign's SRS provides the registrar-facing component of the system establishing the zone file needed to enable DNS and Whois services.*