

Figure 27-1

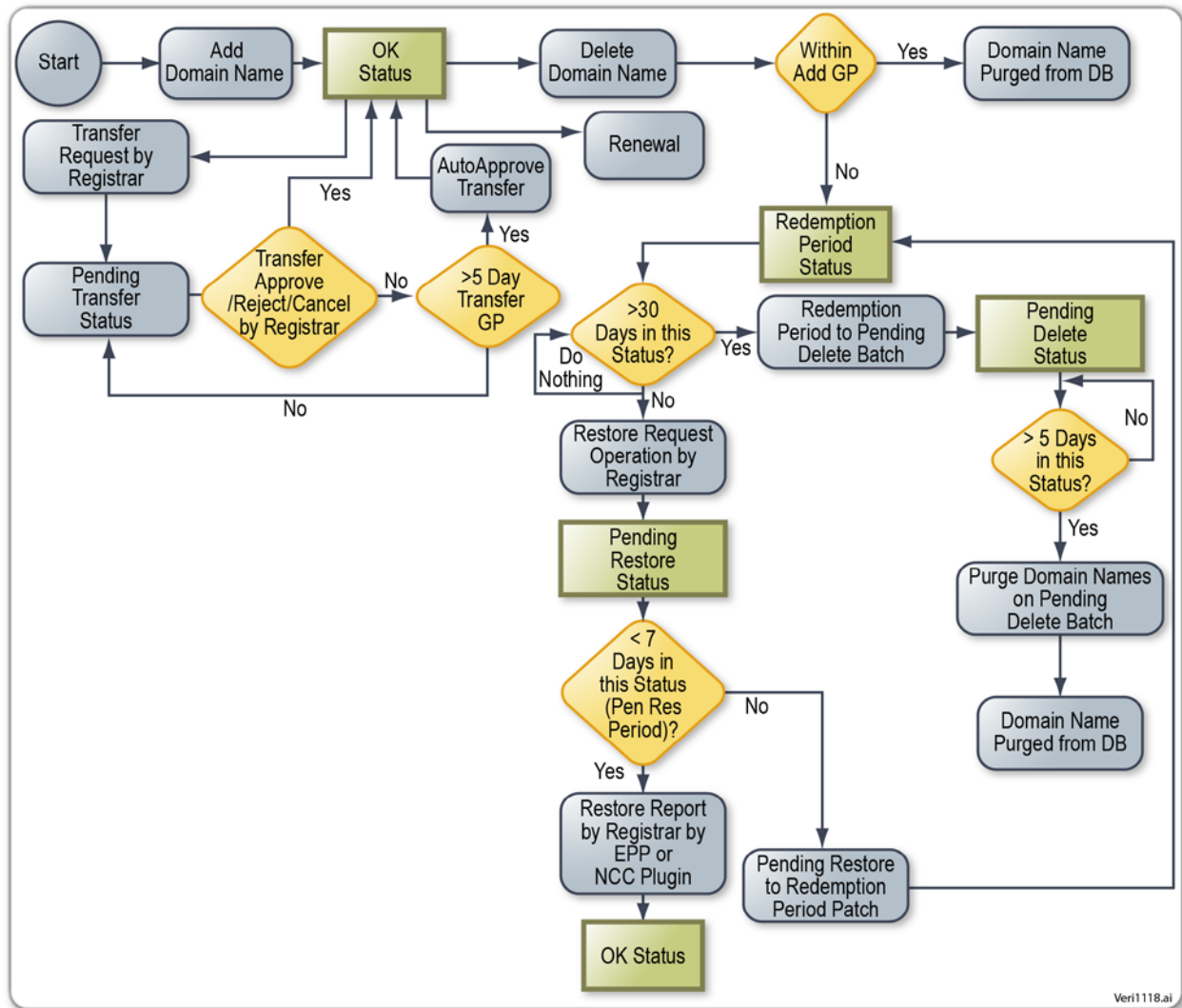


Figure 27-1: Registration Lifecycle State Diagram

Figure 27-2

Registration State	Registration State Description
OK	Once the domain name is registered through the Add Domain operation, the domain name enters OK state. The domain name can be renewed later through either Explicit Renew or Auto Renew operations to extend its expiration date.
Pending Transfer	The domain name enters the Pending Transfer state through the Transfer Request operation initiated by a non-sponsoring registrar. The domain name remains in the Pending Transfer state for up to five days until one of the following operations occurs: Transfer Approve, Transfer Reject, Transfer Cancel, or Transfer Auto Approve. Once the operation is completed, the domain name goes back to OK state.
Redemption Period	The domain name enters Redemption Period state when the sponsoring registrar deletes it after five days of the Add grace period. If it is deleted within five days of the Add grace period, the domain name is purged from the database and is immediately available for new registrations.
Pending Restore	The domain name goes to Pending Restore state if there is a Restore Request operation within 30 days of the Redemption grace period. The domain name goes back to OK state if there is a Restore Report Submission operation within seven days of the Restore Request grace period. Else, the Pending Restore to Redemption Period batch moves the domain name back to Redemption Period state.
Pending Delete	If there is no Restore Request operation within 30 days, the Redemption Period to Pending Delete batch moves the domain name to Pending Delete state. The Purge Domain on Pending Delete batch purges the domain name from the database after five days, and the domain name is then available for new registrations.

Figure27-2: Registration States

Figure 27-3

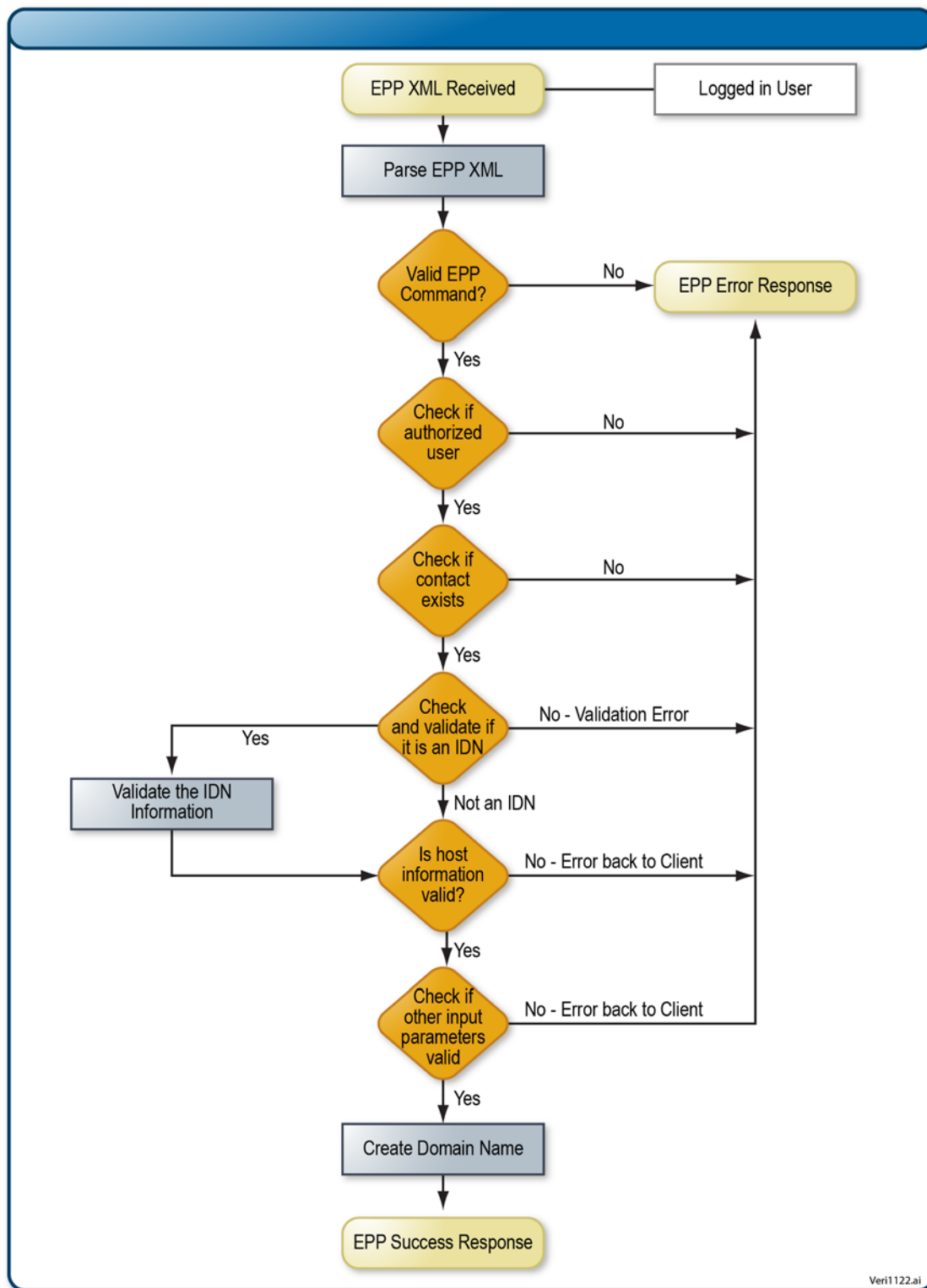


Figure 27-3: Create Process Flow Chart

Figure 27-4

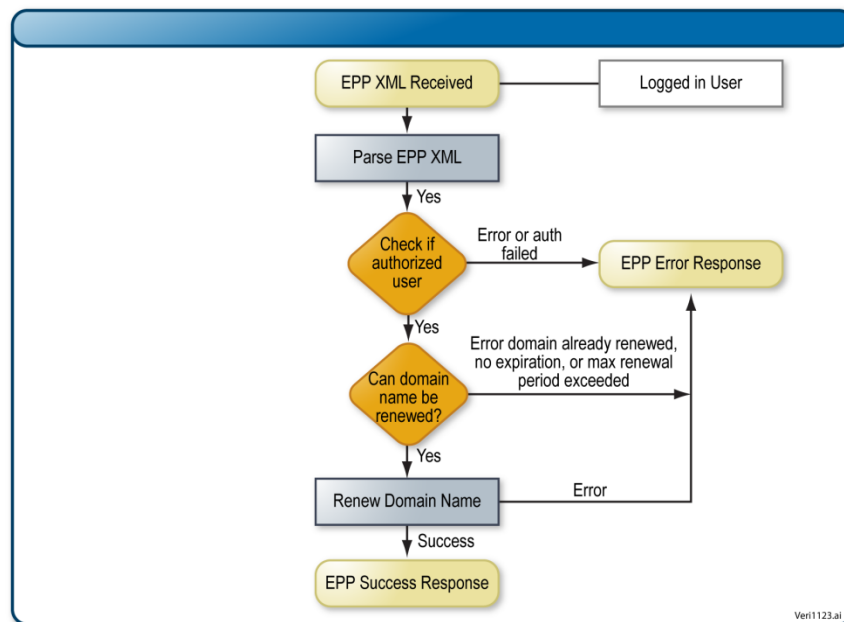


Figure 27-4: Renewal Process Flow Chart

Figure 27-5

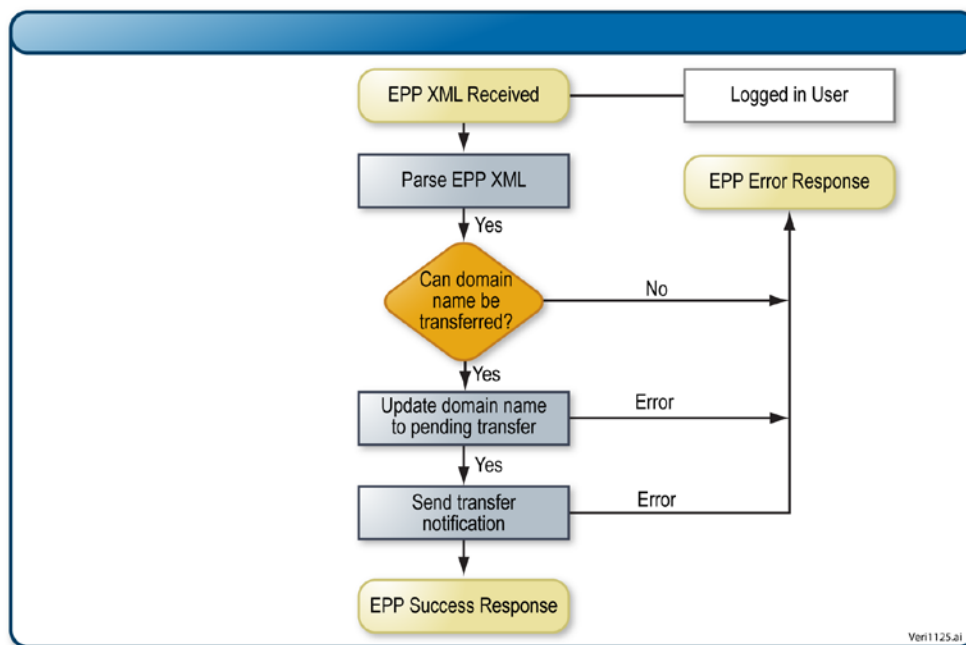


Figure 27-5: Transfer Request Process

Figure 27-6

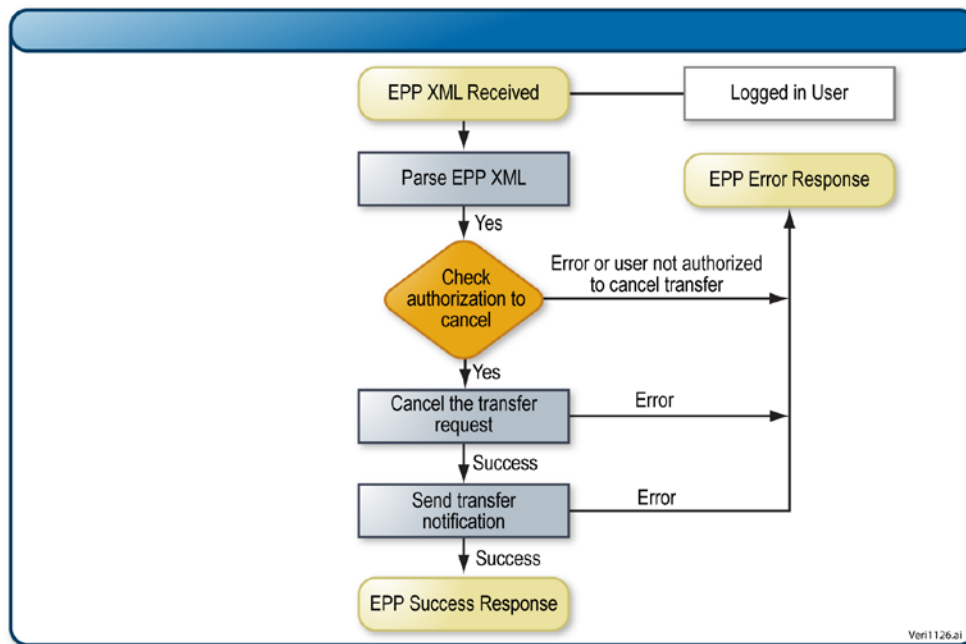


Figure 27-6: Transfer Cancel Process

Figure 27-7

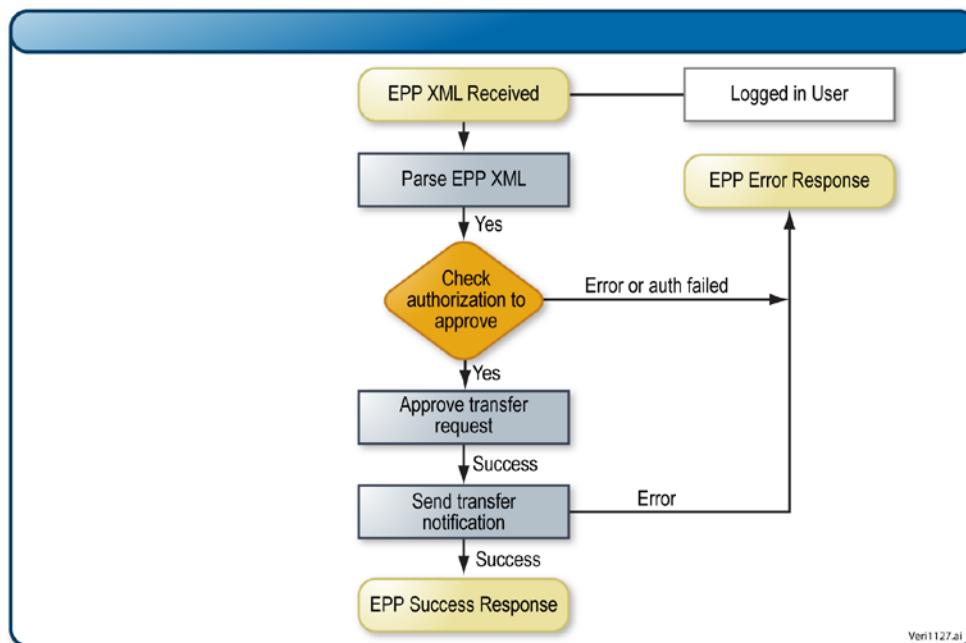


Figure 27-7: Transfer Approve Process

Figure 27-8

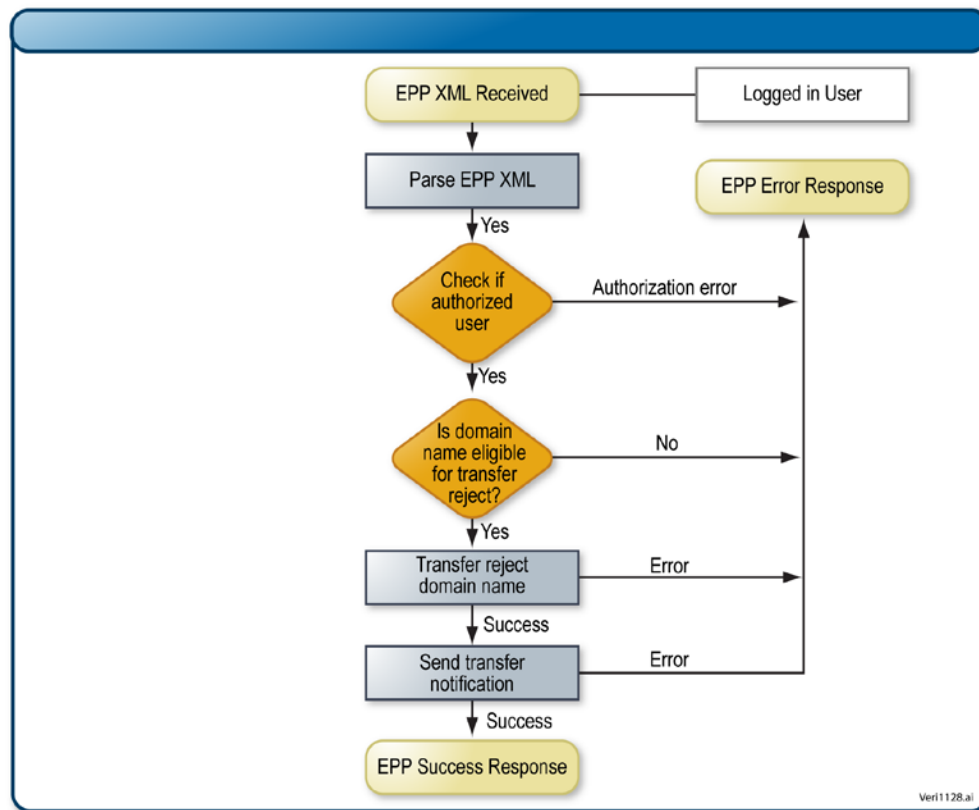


Figure 27-8: Transfer Reject Process

Figure 27-9

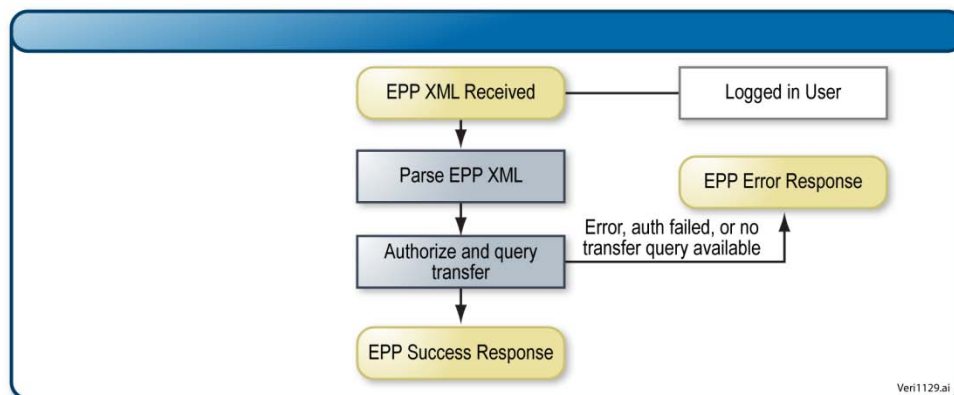


Figure 27-9: Transfer Query Process

Figure 27-10

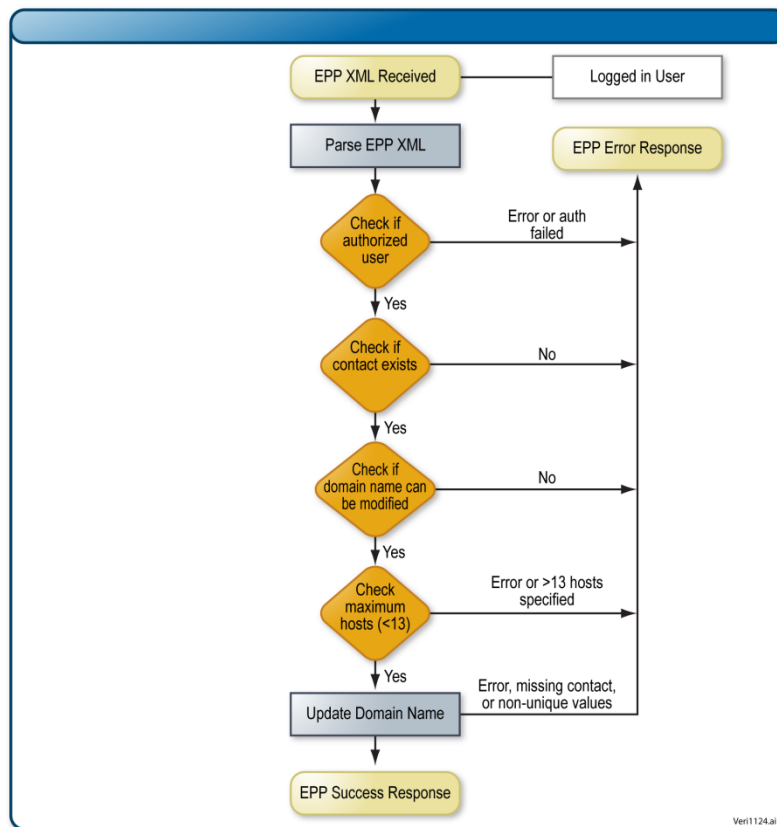


Figure 27-10: Update Process Flow Chart