

Figure 24-1

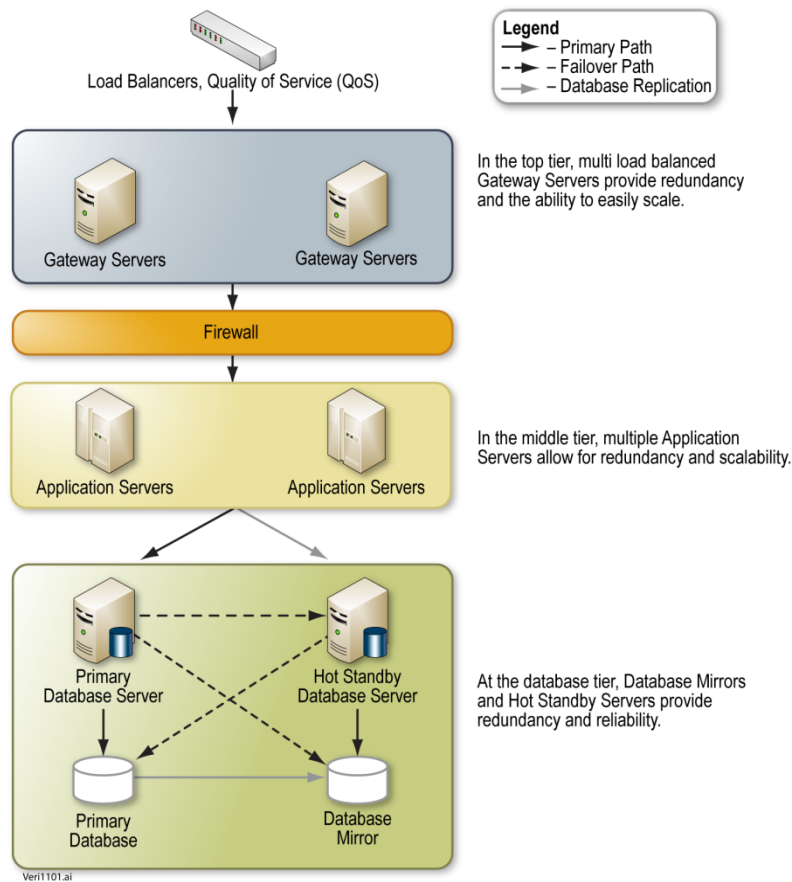


Figure Error! No text of specified style in document.-1: SRS Architecture. Verisign's SRS is hierarchically designed to meet the forecasted registration volume of the SES gTLD, and it can be scaled to meet future registration volume increases.

Figure 24-2

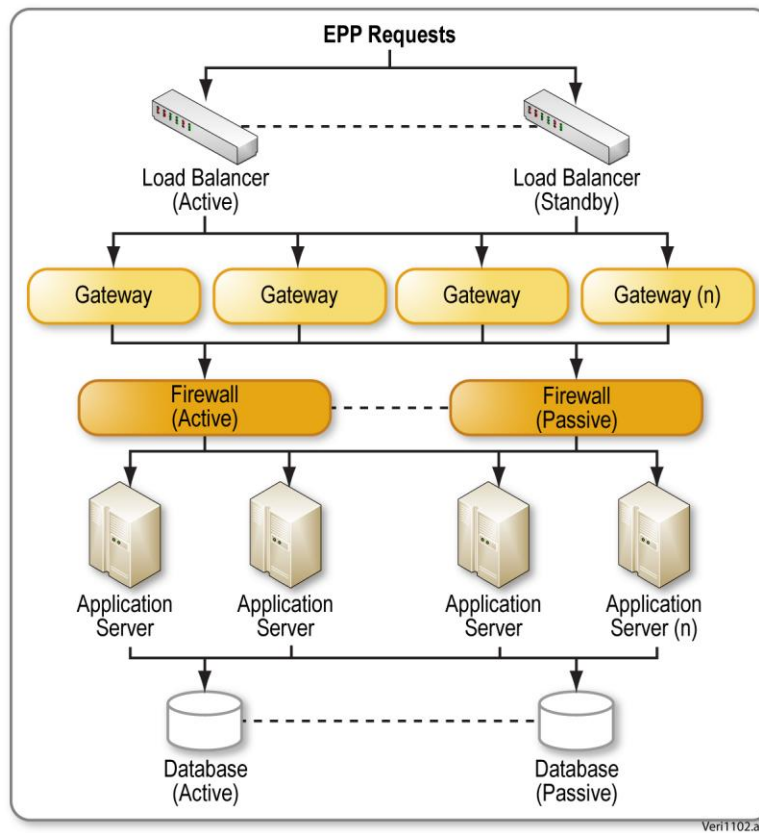


Figure Error! No text of specified style in document.-2: Built-in SRS Redundancy. Verisign's SRS system is built upon multiple layers of redundancy to ensure the system remains highly available.

Figure 24-3

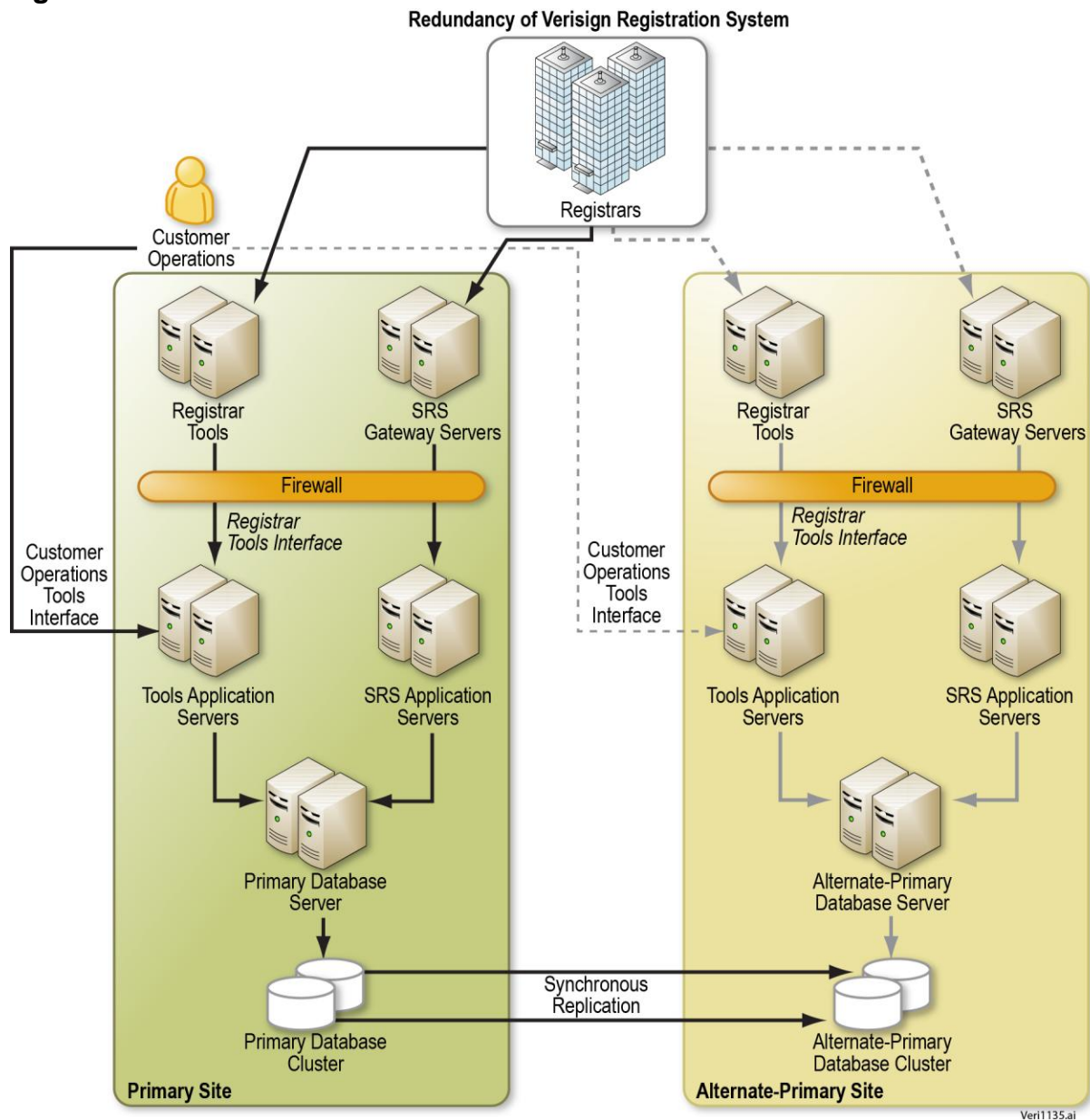


Figure Error! No text of specified style in document.-3: SRS Network Diagram. Verisign's fully redundant SRS design and geographically separated data centers help ensure service level availability requirements are met.

Figure 24-4

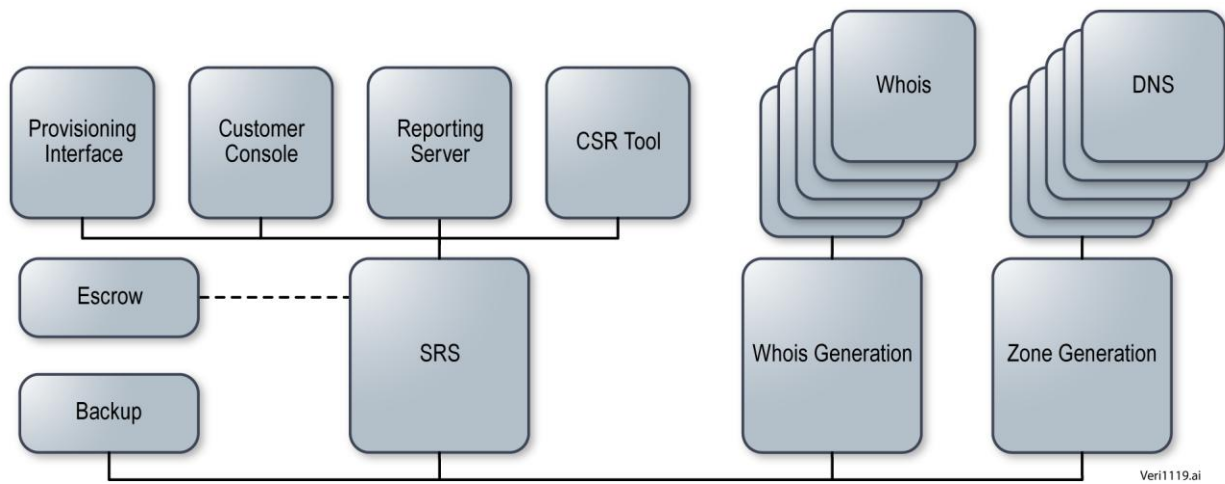


Figure Error! No text of specified style in document.-4: **Technical Overview.** *Verisign's SRS provides the registrar-facing component of the system establishing the zone file needed to enable DNS and Whois services.*